



ADDRESS

Durba Mine Watsa, Haut-Uele,
Democratic Republic of Congo

Chisawakona, Zambia

P.O BOX: 38 90100
Siaya, Kenya

P.O BOX: 18 40 600

TEL.

+243 849 521 244

+260 769 556 638

EMAILS

trade@kiviuinternational.com

info@kiviuinternational.com

Company Profile

Premium mineral trading and export supply solutions

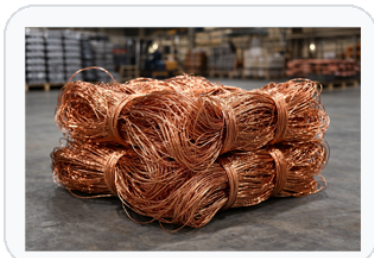
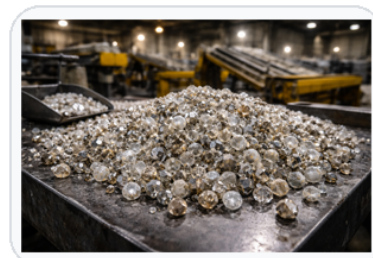
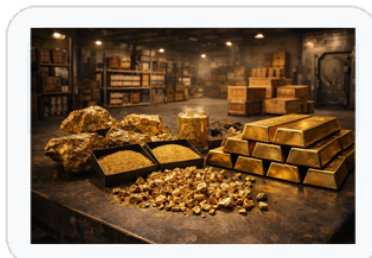
Head Office DR Congo	Commodity Lines 6+	Trading Support 24/7	Market Reach Asia, Europe & Americas
-------------------------	-----------------------	-------------------------	--

Executive Overview

Kivu International Business SARL presents itself as a DRC-based mineral trading house focused on direct sourcing, quality verification, and international supply of premium mineral commodities. The website highlights copper cathodes, gold bullion, diamonds, copper wire, coltan/tantalum, and scrap metals as its core portfolio, with support for buyers, smelters, and manufacturers across international markets.

What the Company Offers

- Direct mineral sourcing from Central African supply regions.
- Independent assay and inspection references including SGS and Bureau Veritas for qualifying shipments.
- Logistics coordination with customs clearance, insurance, and delivery support.
- A stated emphasis on ethical sourcing and responsible mineral supply chains aligned with OECD due diligence guidance.



Commodity Portfolio

The company website presents six main commodity categories. The summary below turns the website details into a presentation-ready profile format that can also be attached in the site download area.

Commodity	Website Positioning	Quality / Grade	Indicative Capacity
Copper Cathodes	Electrolytic copper for industrial use	99.99% min • LME Grade A	1,500+ MT
Gold Bullion & Doré	Investment-grade bars and doré	22K–24K • LBMA compliant	500+ KG
Diamonds	Rough and polished supply	KPCS / GIA • VS-SI	10,000+ carats
Copper Wire	Bare, tinned, enameled variants	99.95% min • AWG 8–30	800+ MT
Coltan & Tantalum	Traceable concentrate for industry	20–35% Ta ₂ O ₅	200+ MT
Scrap Metals	Ferrous and non-ferrous grades	ISRI compliant	5,000+ MT

Product Notes

Copper Cathodes: Positioned on the website as LME Grade A copper sourced from DRC mining regions, suitable for wire rods, sheets, tubes, and industrial fabrication.

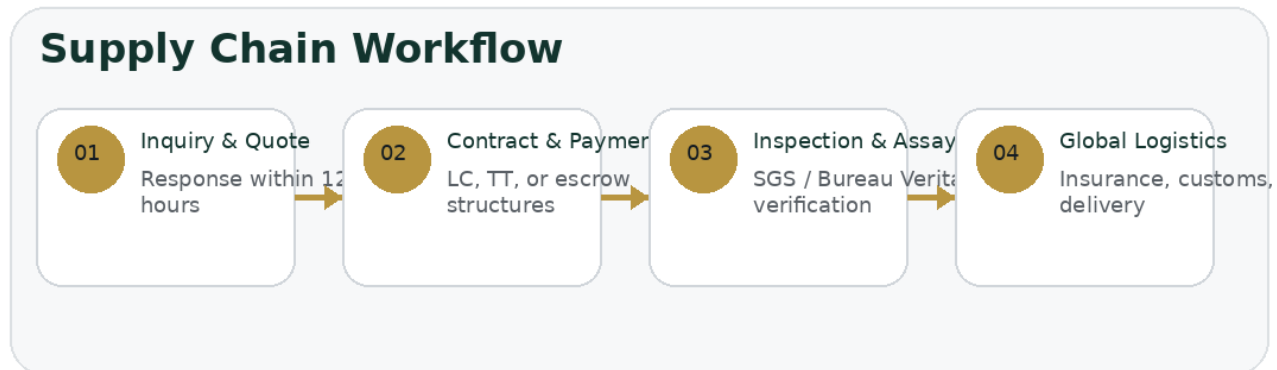
Gold Bullion & Doré: Presented as conflict-free, investment-grade gold with independent fire assay documentation and typical bar sizes ranging from 1 kg to 12.5 kg.

Diamonds: Offered in rough and polished forms with stated certification references including KPCS and GIA.

Copper Wire: Presented for electrical, telecom, and industrial cable manufacturing, with custom spooling noted.

Coltan & Tantalum: Described as a strategic metal concentrate for electronics, capacitors, and aerospace-linked applications.

Scrap Metals: Listed as copper scrap, aluminum, brass, steel, HMS 1&2, used rails, and mixed heavy metals.



Operating Model

Across the home and contact pages, the company presents a workflow built around inquiry, quotation, contract structuring, third-party verification, and global shipping. It also states support for LC, TT, and escrow payment structures, along with insurance and customs handling.

Geographic Presence

DR Congo	Zambia	Kenya
Durba Mine Watsa, Haut-Uele	Chisawakona, P.O. Box 38 90100	Siaya, P.O. Box 18 40 600

Contact & Trading Desk

Telephone

+243 849 521 244
+260 769 556 638

Email

trade@kiviinternational.com
info@kiviinternational.com

Desk Hours

Mon–Fri 08:00–18:00 (CAT)
Sat 09:00–14:00 (CAT)

Website Use

Suitable as a downloadable profile for quote requests, investor introductions, and corporate capability sharing.

Recommended Use on the Website

This profile is structured for the website download area and can serve as a formal company capability document. It is especially useful for buyers requesting a quick overview of product lines, supply structure, locations, and trade support without navigating the full website.

